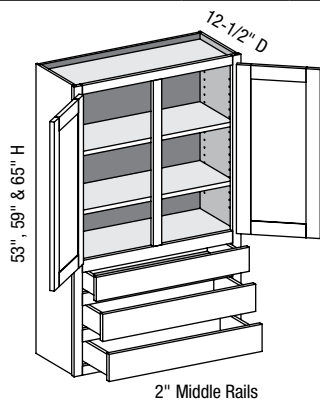


### W3D/CSW3D - Wall Three Drawer w/Butt Doors - continued

Cabinet Code	Advantage				Essence	Doors			Drawer Fronts		
	Price	Exposed End (ea.)	Flush End (ea.)	Shelf	Price	Inset	1/2"	1-1/4"	Inset	1/2"	1-1/4"
W3D3059BD						7.0	7.5	8.3	2.1	2.9	3.3
W3D3359BD						7.8	8.4	9.1	2.4	3.2	3.7
W3D3659BD						8.6	9.2	9.9	2.6	3.5	4.0
W3D2465BD						6.3	6.8	7.5	1.7	2.3	2.7
W3D2765BD						7.2	7.8	8.5	1.9	2.6	3.0
W3D3065BD						8.1	8.7	9.5	2.1	2.9	3.3
W3D3365BD						9.0	9.6	10.5	2.4	3.2	3.7
W3D3665BD						9.9	10.6	11.4	2.6	3.5	4.0

### W3D/CSW3DCS - Wall Three Drawer w/Center Stile



Custom Size Ranges  
 Width: 24"– 36"  
 Height: 30"– 66"  
 Depth: 12", 12-1/2",  
 15", 18", 21", 24"

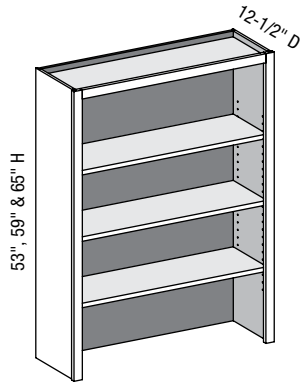
D	DF	DB	EXT	EXP	FL	WS	MI	FT
2	3	3	✓	✓	✓	✓	✓	

- 30"– 41-15/16" high has no shelves.
- 42"– 47-15/16" high has one shelf.
- 48"– 59-15/16" high has two shelves.
- 60"– 66" high has three shelves.
- Specify single or butt doors on cabinets 24" wide.
- When height changes, upper opening height changes. Lower opening height fixed at 4".
- Cabinets ordered with Blum STANDARD 230 slides will receive ball bearing full extension slides.
- 12", 12-1/2" and 15" deep cabinets available with TANDEM only.

Cabinet Code	Advantage				Essence	Doors			Drawer Fronts		
	Price	Exposed End (ea.)	Flush End (ea.)	Shelf	Price	Inset	1/2"	1-1/4"	Inset	1/2"	1-1/4"
W3D2753						4.9	5.6	6.2	1.9	2.6	3.0
W3D3053						5.6	6.3	6.9	2.1	2.9	3.3
W3D3353						6.2	7.0	7.7	2.4	3.2	3.7
W3D3653						6.9	7.7	8.4	2.6	3.5	4.0
W3D2759						5.8	6.6	3.7	1.9	2.6	3.0
W3D3059						6.6	7.4	4.1	2.1	2.9	3.3
W3D3359						7.4	8.3	4.5	2.4	3.2	3.7
W3D3659						8.2	9.1	4.9	2.6	3.5	4.0
W3D2765						6.7	7.7	8.4	1.9	2.6	3.0
W3D3065						7.6	8.6	9.4	2.1	2.9	3.3
W3D3365						8.6	9.5	10.3	2.4	3.2	3.7
W3D3665						9.5	10.5	11.3	2.6	3.5	4.0

Options Key: D=Number of Doors DF=Number of Drawer Fronts DB=Drawer Boxes EXT=Extended Stiles EXP=Exposed End(s)  
 FL=Flush End(s) WS=Solid Wood Shelves MI=Matching Interior FT=Flush Toe

## WOBS/CSWOBS - Wall Open Bookshelf



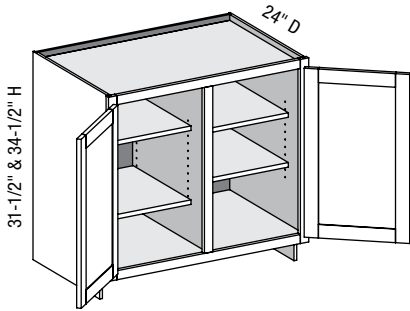
Custom Size Ranges  
 Width: 15" – 36"  
 Height: 30" – 66"  
 Depth: 5-1/2" – 27"

D	DF	DB	EXT	EXP	FL	WS	MI	FT
			✓	✓	✓	✓	✓	

- 30" – 35-15/16" high has one shelf.
- 36" – 47-15/16" high has two shelves.
- 48" – 59-15/16" high has three shelves.
- 60" – 66" high has four shelves.

Cabinet Code	Advantage			Essence	Doors			Drawer Fronts			
	Price	Exposed End (ea.)	Flush End (ea.)	Shelf	Price	Inset	1/2"	1-1/4"	Inset	1/2"	1-1/4"
WOBS1553						—	—	—	—	—	—
WOBS1853						—	—	—	—	—	—
WOBS2153						—	—	—	—	—	—
WOBS2453						—	—	—	—	—	—
WOBS2753						—	—	—	—	—	—
WOBS3053						—	—	—	—	—	—
WOBS3353						—	—	—	—	—	—
WOBS3653						—	—	—	—	—	—
WOBS1559						—	—	—	—	—	—
WOBS1859						—	—	—	—	—	—
WOBS2159						—	—	—	—	—	—
WOBS2459						—	—	—	—	—	—
WOBS2759						—	—	—	—	—	—
WOBS3059						—	—	—	—	—	—
WOBS3359						—	—	—	—	—	—
WOBS3659						—	—	—	—	—	—
WOBS1565						—	—	—	—	—	—
WOBS1865						—	—	—	—	—	—
WOBS2165						—	—	—	—	—	—
WOBS2465						—	—	—	—	—	—
WOBS2765						—	—	—	—	—	—
WOBS3065						—	—	—	—	—	—
WOBS3365						—	—	—	—	—	—
WOBS3665						—	—	—	—	—	—

## MC2FD/CSMC2FD - Media Center Two Full Doors



Custom Size Ranges  
 Width: 30"– 48"  
 Height: 10"– 48"  
 Depth: 5-1/2"– 30"

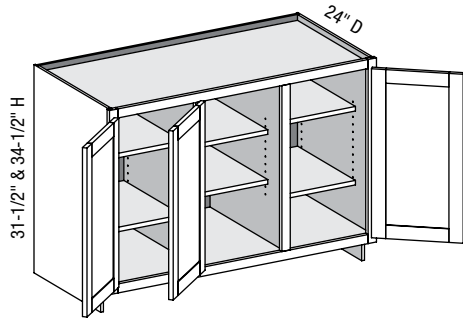
D	DF	DB	EXT	EXP	FL	WS	MI	FT
2			✓	✓	✓	✓	✓	✓

- 10"– 22" high has no shelves.
- 22-1/16"– 28" high has one shelf.
- 28-1/16"– 40" high has two shelves.
- 40-1/16"– 48" high has three shelves.
- Fixed vertical partition with independently adjustable shelves.

Cabinet Code	Advantage				Essence	Doors			Drawer Fronts		
	Price	Exposed End (ea.)	Flush End (ea.)	Shelf	Price	Inset	1/2"	1-1/4"	Inset	1/2"	1-1/4"
MC2FD3031.5						4.2	4.9	5.4	—	—	—
MC2FD3331.5						4.7	5.4	6.0	—	—	—
MC2FD3631.5						5.3	5.9	6.6	—	—	—
MC2FD3931.5						5.8	6.5	7.1	—	—	—
MC2FD4231.5						6.3	7.0	7.7	—	—	—
MC2FD4531.5						6.8	7.5	8.3	—	—	—
MC2FD4831.5						7.3	8.1	8.8	—	—	—
MC2FD3034.5						4.8	5.4	6.0	—	—	—
MC2FD3334.5						5.3	6.0	6.7	—	—	—
MC2FD3634.5						5.9	6.6	7.3	—	—	—
MC2FD3934.5						6.5	7.2	7.9	—	—	—
MC2FD4234.5						7.0	7.8	8.5	—	—	—
MC2FD4534.5						7.6	8.4	9.2	—	—	—
MC2FD4834.5						8.2	9.0	9.8	—	—	—

**Options Key:** D=Number of Doors DF=Number of Drawer Fronts DB=Drawer Boxes EXT=Extended Stiles EXP=Exposed End(s)  
 FL=Flush End(s) WS=Solid Wood Shelves MI=Matching Interior FT=Flush Toe

### MC3FD/CSMC3FD - Media Center Three Full Doors



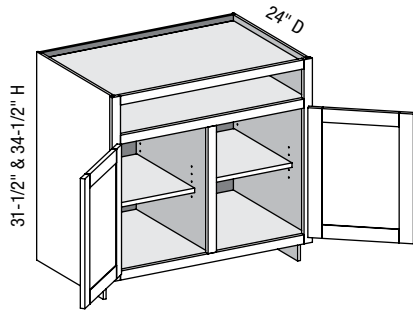
Custom Size Ranges  
 Width: 48" – 72"  
 Height: 10" – 48"  
 Depth: 5-1/2" – 30"

D	DF	DB	EXT	EXP	FL	WS	MI	FT
3			✓	✓	✓	✓	✓	✓

- 10" – 22" high has no shelves.
- 22-1/16" – 28" high has one shelf.
- 28-1/16" – 40" high has two shelves.
- 40-1/16" – 48" high has three shelves.
- Fixed vertical partition with independently adjustable shelves.
- Doors hinged on center style require 1/2" overlay hinges for 1-1/4" and 1-3/8" overlays.

Cabinet Code	Advantage				Essence	Doors			Drawer Fronts		
	Price	Exposed End (ea.)	Flush End (ea.)	Shelf	Price	Inset	1/2"	1-1/4"	Inset	1/2"	1-1/4"
MC3FD4831.5						7.0	8.0	8.7	—	—	—
MC3FD5131.5						7.5	8.5	9.3	—	—	—
MC3FD5431.5						8.0	9.0	9.8	—	—	—
MC3FD5731.5						8.5	9.6	10.4	—	—	—
MC3FD6031.5						9.0	10.1	11.0	—	—	—
MC3FD6331.5						9.5	10.6	11.5	—	—	—
MC3FD6631.5						10.0	11.2	12.1	—	—	—
MC3FD6931.5						10.5	11.7	12.7	—	—	—
MC3FD7231.5						11.0	12.2	13.2	—	—	—
MC3FD4834.5						7.9	8.9	9.7	—	—	—
MC3FD5134.5						8.4	9.5	10.3	—	—	—
MC3FD5434.5						9.0	10.1	10.9	—	—	—
MC3FD5734.5						9.6	10.7	11.6	—	—	—
MC3FD6034.5						10.1	11.3	12.2	—	—	—
MC3FD6334.5						10.7	11.9	12.8	—	—	—
MC3FD6634.5						11.3	12.5	13.4	—	—	—
MC3FD6934.5						11.8	13.1	14.1	—	—	—
MC3FD7234.5						12.4	13.7	14.7	—	—	—

## MC2D/CSMC2D - Media Center Two Door



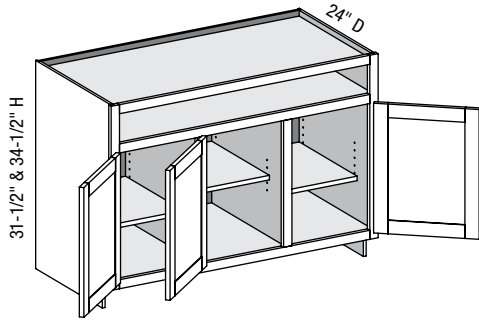
Custom Size Ranges  
 Width: 30" – 48"  
 Height: 31-1/2" – 42"  
 Depth: 5-1/2" – 30"

D	DF	DB	EXT	EXP	FL	WS	MI	FT
2			✓	✓	✓	✓	✓	✓

- Fixed vertical partition with independently adjustable shelves.
- When height changes, lower opening height changes. Upper opening height fixed at 5".

Cabinet Code	Advantage				Essence	Doors			Drawer Fronts		
	Price	Exposed End (ea.)	Flush End (ea.)	Shelf	Price	Inset	1/2"	1-1/4"	Inset	1/2"	1-1/4"
MC2D3031.5						3.1	3.6	4.1	—	—	—
MC2D3331.5						3.5	4.0	4.5	—	—	—
MC2D3631.5						3.9	4.4	4.9	—	—	—
MC2D3931.5						4.2	4.8	5.3	—	—	—
MC2D4231.5						4.6	5.2	5.8	—	—	—
MC2D4531.5						5.0	5.6	6.2	—	—	—
MC2D4831.5						5.3	6.0	6.6	—	—	—
MC2D3034.5						3.6	4.2	4.7	—	—	—
MC2D3334.5						4.1	4.7	5.2	—	—	—
MC2D3634.5						4.5	5.1	5.7	—	—	—
MC2D3934.5						4.9	5.6	6.1	—	—	—
MC2D4234.5						5.4	6.0	6.6	—	—	—
MC2D4534.5						5.8	6.5	7.1	—	—	—
MC2D4834.5						6.2	7.0	7.6	—	—	—

### MC3D/CSMC3D - Media Center Three Door



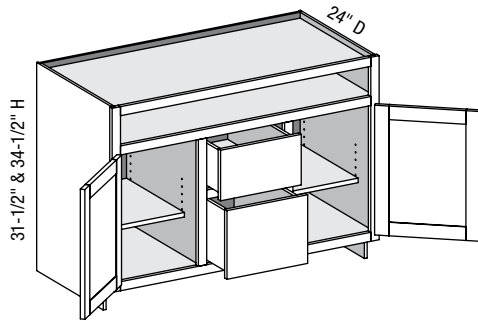
Custom Size Ranges  
 Width: 48"– 72"  
 Height: 31-1/2"– 42"  
 Depth: 5-1/2"– 30"

D	DF	DB	EXT	EXP	FL	WS	MI	FT
3			✓	✓	✓	✓	✓	✓

- Fixed vertical partition with independently adjustable shelves.
- When height changes, lower opening height changes. Upper opening height fixed at 5".
- Doors hinged on center style require 1/2" overlay hinges for 1-1/4" and 1-3/8" overlays.

Cabinet Code	Advantage				Essence	Doors			Drawer Fronts		
	Price	Exposed End (ea.)	Flush End (ea.)	Shelf	Price	Inset	1/2"	1-1/4"	Inset	1/2"	1-1/4"
MC3D4831.5						5.1	5.9	6.5	—	—	—
MC3D5131.5						5.5	6.3	7.0	—	—	—
MC3D5431.5						5.9	6.7	7.4	—	—	—
MC3D5731.5						6.2	7.1	7.8	—	—	—
MC3D6031.5						6.6	7.5	8.2	—	—	—
MC3D6331.5						7.0	7.9	8.6	—	—	—
MC3D6631.5						7.4	8.3	9.1	—	—	—
MC3D6931.5						7.7	8.7	9.5	—	—	—
MC3D7231.5						8.1	9.1	9.9	—	—	—
MC3D4834.5						6.0	6.9	7.5	—	—	—
MC3D5134.5						6.4	7.3	8.0	—	—	—
MC3D5434.5						6.9	7.8	8.5	—	—	—
MC3D5734.5						7.3	8.3	9.0	—	—	—
MC3D6034.5						7.7	8.7	9.4	—	—	—
MC3D6334.5						8.2	9.2	9.9	—	—	—
MC3D6634.5						8.6	9.6	10.4	—	—	—
MC3D6934.5						9.0	10.1	10.9	—	—	—
MC3D7234.5						9.5	10.5	11.4	—	—	—

## MC2D2D/CSMC2D2D - Media Center Two Door Two Drawer



Custom Size Ranges  
 Width: 48" – 72"  
 Height: 31-1/2" – 34-1/2"  
 Depth: 12", 15", 18"  
 21", 24", 27", 30"

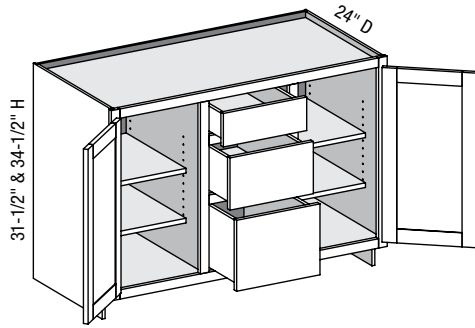
D	DF	DB	EXT	EXP	FL	WS	MI	FT
2	2	2	✓	✓	✓	✓	✓	✓

- Fixed vertical partition with independently adjustable shelves.
- When height changes, lower opening height changes. Upper opening height fixed at 5". Middle opening height fixed at 8".
- 12", 15", 27" and 30" cabinet depths are available with TANDEM slides only.

Cabinet Code	Advantage				Essence	Doors			Drawer Fronts		
	Price	Exposed End (ea.)	Flush End (ea.)	Shelf	Price	Inset	1/2"	1-1/4"	Inset	1/2"	1-1/4"
MC2D2D4831.5						3.4	4.0	4.4	1.5	1.9	2.1
MC2D2D5131.5						3.7	4.2	4.7	1.7	2.1	2.2
MC2D2D5431.5						3.9	4.5	5.0	1.8	2.2	2.3
MC2D2D5731.5						4.1	4.8	5.3	1.9	2.3	2.5
MC2D2D6031.5						4.4	5.0	5.6	2.0	2.4	2.6
MC2D2D6331.5						4.7	5.3	5.8	2.1	2.6	2.7
MC2D2D6631.5						4.9	5.5	6.1	2.2	2.7	2.9
MC2D2D6931.5						5.1	5.8	6.4	2.3	2.8	3.0
MC2D2D7231.5						5.4	6.1	6.7	2.4	2.9	3.2
MC2D2D4834.5						4.0	4.6	5.1	1.8	2.2	2.4
MC2D2D5134.5						4.3	4.9	5.4	2.0	2.4	2.5
MC2D2D5434.5						4.6	5.2	5.7	2.1	2.5	2.7
MC2D2D5734.5						4.9	5.5	6.1	2.2	2.7	2.8
MC2D2D6034.5						5.1	5.8	6.4	2.4	2.8	3.0
MC2D2D6334.5						5.4	6.1	6.7	2.5	3.0	3.2
MC2D2D6634.5						5.7	6.4	7.0	2.6	3.1	3.3
MC2D2D6934.5						6.0	6.7	7.3	2.8	3.3	3.5
MC2D2D7234.5						6.3	7.0	7.7	2.9	3.4	3.6

**Options Key:** D=Number of Doors DF=Number of Drawer Fronts DB=Drawer Boxes EXT=Extended Stiles EXP=Exposed End(s)  
 FL=Flush End(s) WS=Solid Wood Shelves MI=Matching Interior FT=Flush Toe

### MC2D3D/CSMC2D3D - Media Center Two Door Three Drawer



Custom Size Ranges  
 Width: 48"– 72"  
 Height: 31-1/2"– 34-1/2"  
 Depth: 12", 15", 18"  
 21", 24", 27", 30"

D	DF	DB	EXT	EXP	FL	WS	MI	FT
2	3	3	✓	✓	✓	✓	✓	✓

- Fixed vertical partition with independently adjustable shelves.
- When height changes, lower opening height changes. Upper opening height fixed at 5". Middle opening height fixed at 8".
- 12", 15", 27" and 30" cabinet depths are available with TANDEM slides only.

Cabinet Code	Advantage				Essence	Doors			Drawer Fronts		
	Price	Exposed End (ea.)	Flush End (ea.)	Shelf	Price	Inset	1/2"	1-1/4"	Inset	1/2"	1-1/4"
MC2D3D4831.5						4.7	5.3	5.9	2.0	2.6	2.7
MC2D3D5131.5						5.0	5.7	6.3	2.1	2.7	2.9
MC2D3D5431.5						5.3	6.0	6.7	2.3	2.9	3.1
MC2D3D5731.5						5.7	6.4	7.0	2.4	3.1	3.3
MC2D3D6031.5						6.0	6.7	7.4	2.6	3.2	3.4
MC2D3D6331.5						6.4	7.1	7.8	2.7	3.4	3.6
MC2D3D6631.5						6.7	7.4	8.2	2.9	3.6	3.8
MC2D3D6931.5						7.0	7.8	8.5	3.0	3.7	4.0
MC2D3D7231.5						7.4	8.1	8.9	3.2	3.9	4.2
MC2D3D4834.5						5.2	5.9	6.6	2.3	2.9	3.0
MC2D3D5134.5						5.6	6.3	7.0	2.5	3.1	3.2
MC2D3D5434.5						6.0	6.7	7.4	2.6	3.3	3.4
MC2D3D5734.5						6.4	7.1	7.8	2.8	3.4	3.6
MC2D3D6034.5						6.8	7.5	8.2	3.0	3.6	3.8
MC2D3D6334.5						7.1	7.9	8.6	3.1	3.8	4.0
MC2D3D6634.5						7.5	8.3	9.1	3.3	4.0	4.2
MC2D3D6934.5						7.9	8.7	9.5	3.5	4.2	4.4
MC2D3D7234.5						8.3	9.1	9.9	3.6	4.4	4.6